

TOWNSHIP 52 S RANGE 40 E

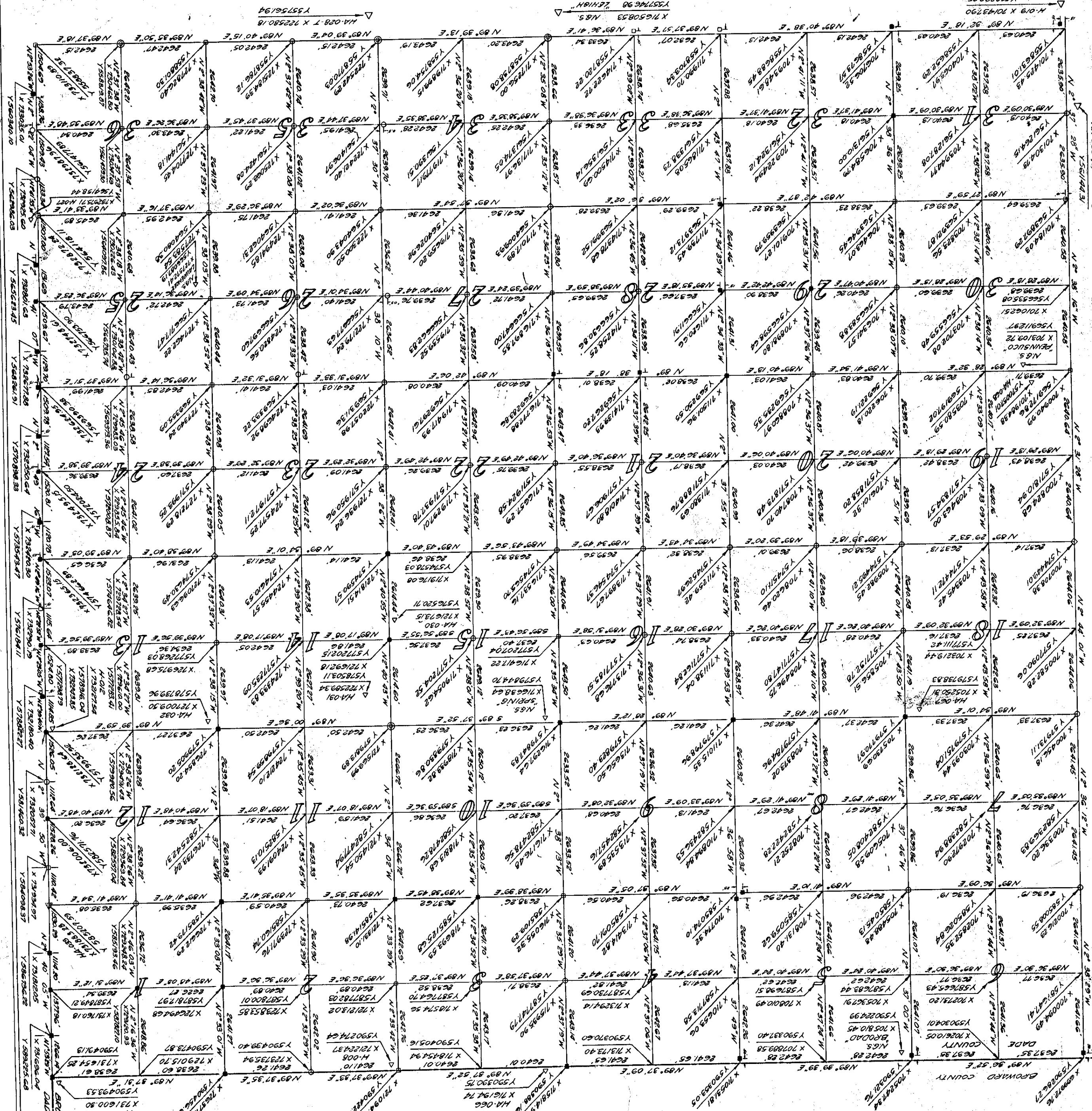
Checked	✓
Drawn	✓
Calculated	✓
Surveyed	✓

■ D.C. Brass Disc in Concrete Monument
 ○ Pipe in Concrete Monument
 ⊙ Spikes with Brass Disc
 ○ Pipe (Ingravel or Drill Hole)
 ◊ Original State Pipe in Concrete
 △ Horizontal Control Monument

LEGEND

METROPOLITAN DADE COUNTY PUBLIC WORKS DEPARTMENT
 ENGINEERING SERVICES DIVISION, SURVEY SECTION
 NOVEMBER 1976
 NO SCALE
 ALL DATA SHOWN IS PER STATE PLANE CO-ORDINATE
 SYSTEM, FLORIDA EAST ZONE, NATIONAL GEODETIC
 SURVEY, 1974 ADJUSTMENT

Note: Original Township Survey was by TE Frederick
 in 1912 for Authority of the Trustees of the
 Internal Improvement Fund of Florida. Only
 galvanized pipes with stamped brass inserts
 section corners were set and they were
 in Threaded Couplings.
 10/15/78 Minor changes in Section 33
 11/20/78 Minor changes in Section 33



BROWARD COUNTY
 DADE COUNTY