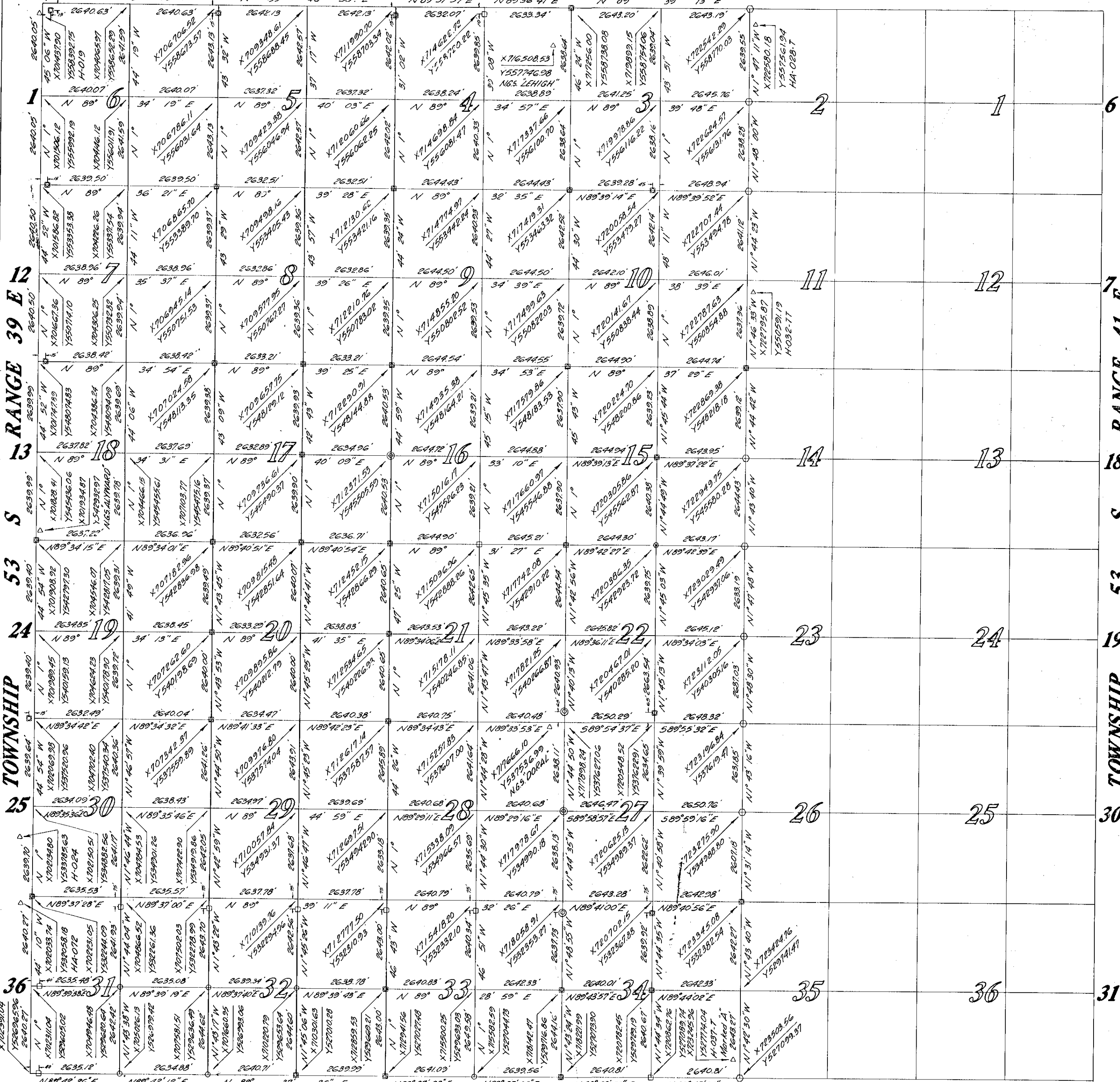


# TOWNSHIP 53 S RANGE 40 E

## TOWNSHIP 52 S RANGE 40 E

52-39

52-41



LOT 6

LOT 5

LOT 4

LOT 3

LOT 2

LOT 1

METROPOLITAN DADE COUNTY PUBLIC WORKS DEPARTMENT  
 ENGINEERING SERVICES DIVISION, SURVEY SECTION  
 MARCH 1978 NO SCALE

**LEGEND**

- △ Horizontal Control Monument
- ⊠ Concrete Monument W/ Dade Co. Brass Disc
- ⊡ Original State Pipe W/ Disc in Concrete
- ⊞ Concrete Monument W/ Pipe
- ⊙ Dade County Brass Disc In Existing Concrete
- ⊕ Spike W/ Dade County Washer In Asphalt
- ⊗ Straddled Manhole
- Pipe

Note:  
 Original Township Survey was By T.E. Frederick in 1912 Per Authority of the "Trustees of the Internal Improvement Fund". West Range Line was Corrected By N.B. Broward under same Authority in 1918. Only Section Corners were set and they were 1 1/4 inch Galvanized Pipe with Stamped Brass or Lead Inserts in Threaded Couplings.

ALL DATA SHOWN IS PER STATE PLANE CO-ORDINATE SYSTEM, FLORIDA, EAST ZONE, NATIONAL GEODETIC SURVEY, 1974 ADJUSTMENT.

Surveyed	u.c.f.
Calculated	u.c.f.
Drawn	T.R.F.
Checked	u.c.f.