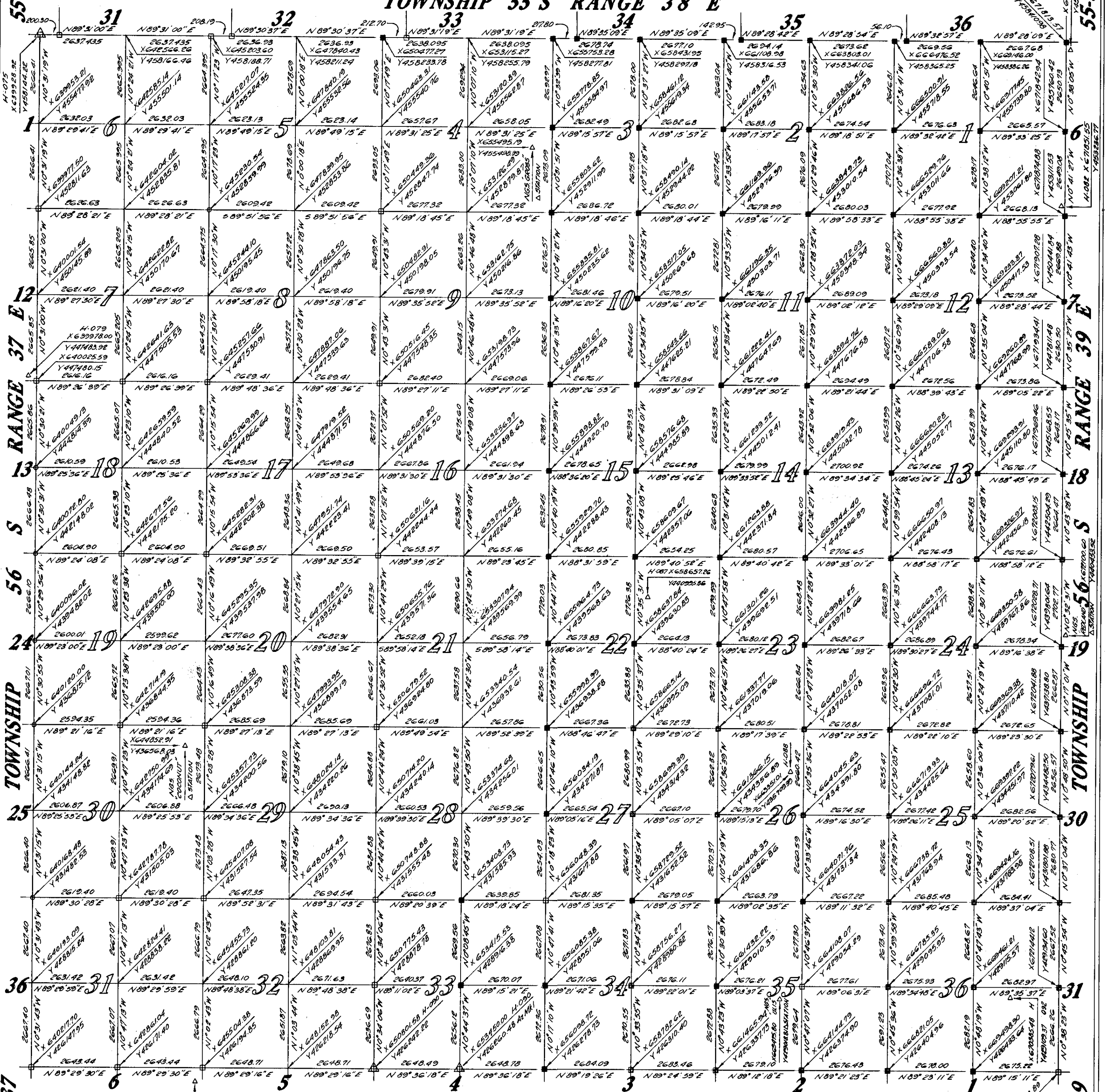


# TOWNSHIP 56 S RANGE 38 E

## TOWNSHIP 55 S RANGE 38 E

## TOWNSHIP 57 S RANGE 38 E



Note:  
 Easterly 5/6 of Township was Surveyed by M.A. Williams in 1847 for General Land Office. Easterly 1/6 was Re-Surveyed in 1966 by Dade County Survey Section. This Map shows recent Re-Survey of Westerly 1/6 and Adjustment of Easterly 1/6 to N.G.S. 1974 Adjustment.

METROPOLITAN DADE COUNTY WORKS DEPARTMENT  
 ENGINEERING SERVICES DIVISION SURVEY SECTION  
 OCTOBER 1976  
 NO SCALE

ALL DATA SHOWN IS PER STATE PLANE CO-ORDINATE SYSTEM, FLORIDA, EAST ZONE, NATIONAL GEODETIC SURVEY, 1974 ADJUSTMENT.

- LEGEND
- = Pipe in Concrete Monument
  - = D.C. Brass Disc in Concrete Monument
  - = Monument in Cast Iron Box
  - = Brass Disc on 1/4" Pipe
  - △ = Horizontal Control Monument

Surveyed	MD&RI
Calculated	J.C.F.
Drawn	J.R.F.
Checked	J.C.F.