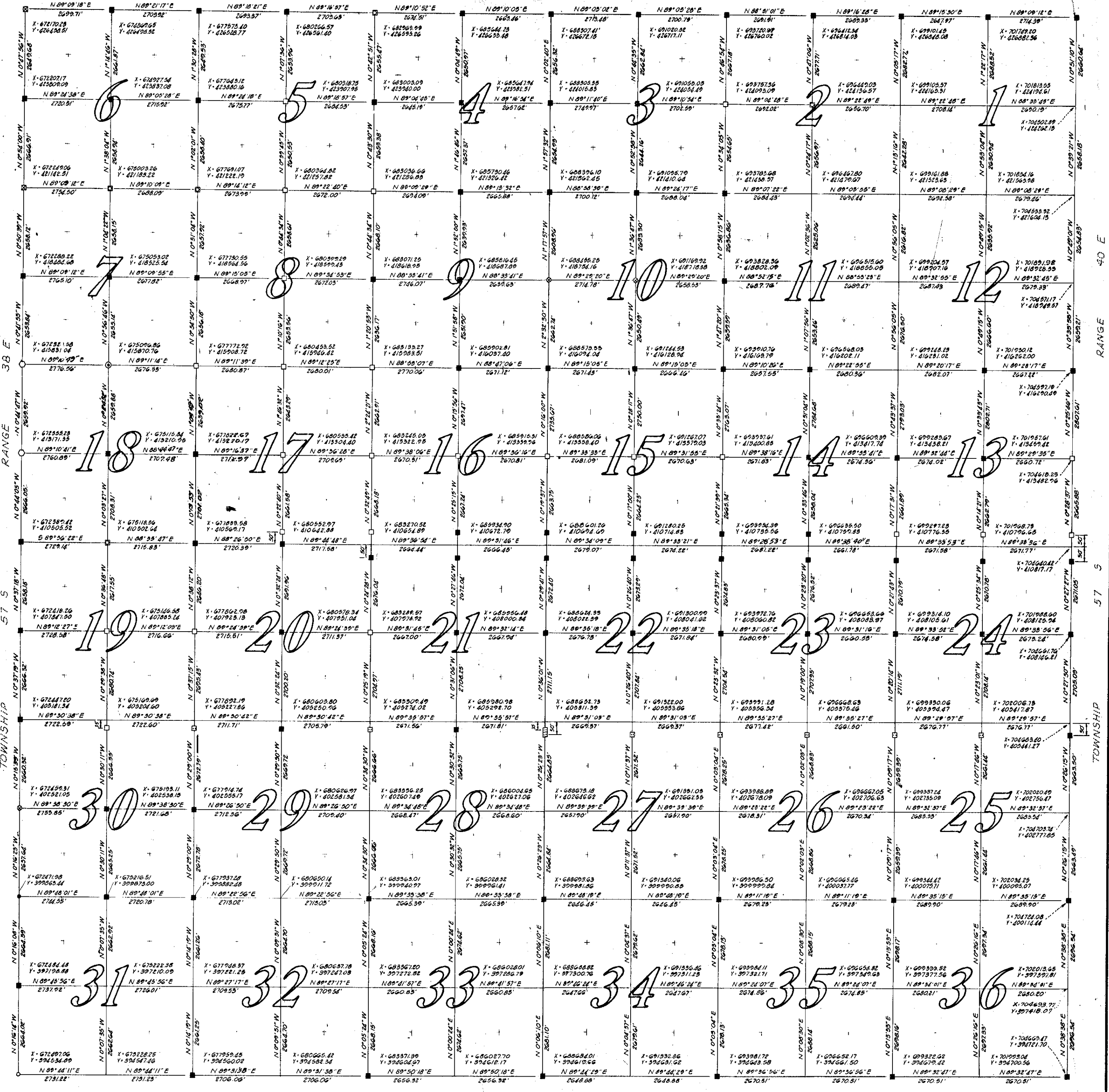


TOWNSHIP 57 S RANGE 39 E

TOWNSHIP 57 S RANGE 39 E

X-70166.29
Y-42612.47



TOWNSHIP 57 S RANGE 39 E

LEGEND

- 10" Concrete Monument (Numbered)
- 10" Concrete Monument (Not Numbered)
- ⊠ 10" Concrete Monument (Double Point)
- ⊙ Point in Cast Iron Box
- ⊕ U.S.C. and G.S. Brass in Casting
- ⊗ Cylindrical Concrete Monument
- ⊖ Drill Hole in Curb
- ⊘ Iron Pipe
- ⊙ Large Axle
- ⊖ Straddled Sewer Manhole

PREPARED BY THE

METROPOLITAN DADE COUNTY PUBLIC WORKS DEPARTMENT

Reference: Dade County Field Book 892

JULY, 1968

NO SCALE

Correct Data - Interior of Section 17 & 18, Apr. 9, 1974
Correct Data - Interior of Township June 12, 1974

Surveyed	J.P.
Drawn	H.S.
Checked	H.A.

Date	REVISION
1-20-70	CORRECTED CO-ORDINATE SW 1/4 SEC. 23