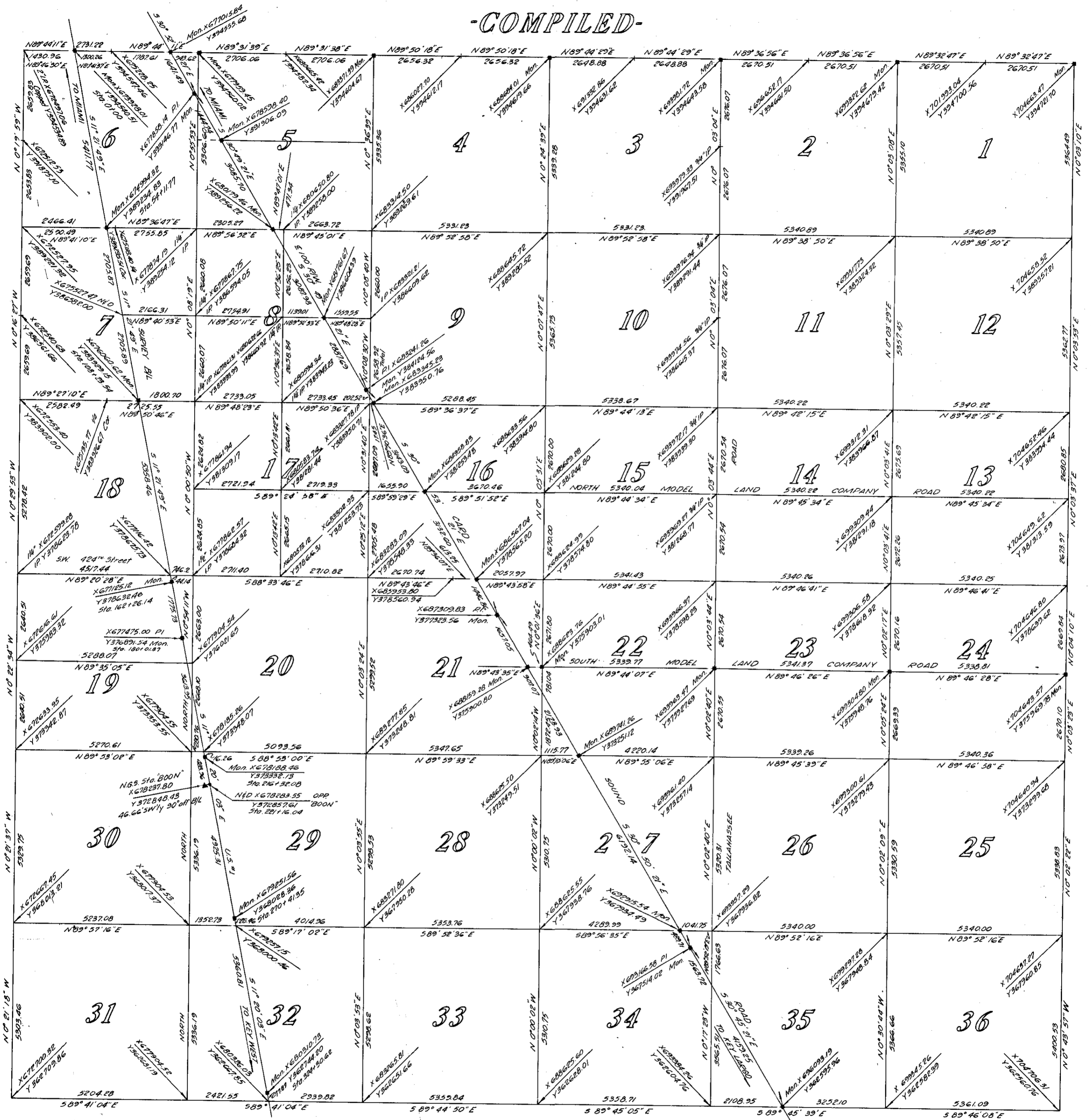


TOWNSHIP 58 S RANGE 39 E

-COMPILED-



Notes on sources of Data Compiled above.

1. Monumented B/L on U.S.M.I. was set in 1962 Ref. F.B. 610. B/L is 11 Feet NE'LY of &. These Monuments were set on Prorated Stationing of original F.E.C.R.Y. R/W Map for each East-West Section Line and are currently disputed in four instances as shown above.
2. Monumented C/L of 100' R/W on Card Sound Road was set in 1963 Ref. F.B. 1050
3. Points shown on Tallahassee Road based on Traverse in F.B. 8924 956.
4. 5 1/2 Miles on West Range Line & Entire East Range Line based on C.F.S. F.C.D. R/W Maps.
5. NLY 3 Miles on West Range Line & ELY to U.S.M.I. based on Old Surveys by A.R. Livingston
6. Sections 13 thru 16 and 21 thru 24 Lying East of Card Sound Road based on Surveys for Model Land Co. by A.R. Livingston and County Traverse F.B. 610.
7. North Line of Township based on Dade County Survey of Township 57-39
8. That Portion of Section 7 & 8 Lying between the Highways based on County Survey F.B. 1047
9. Data shown on Section 17 is from C.F.S. F.C.D. R/W Maps
10. Section 25 thru 36 based on County Bulkhead Survey F.B. 610 and accepted by C.F.S. F.C.D.
11. Sections 1 thru 4 and 9 thru 12 being bounded by known Lines are shown here, Theoretical only.

Revision: Interior Sec. 17
Feb. 1978

All Data Shown is Based On The
State Plane Co-Ordinate System
Florida, East Zone, Third Order
J.C. Frazier For Dade County
September 1973.

Surveyed	J.C.F.
Drawn	J.R.R.
Checked	J.C.F.